

Well xxx

DIPMETER LOG.

Tectonic and sedimentary planes

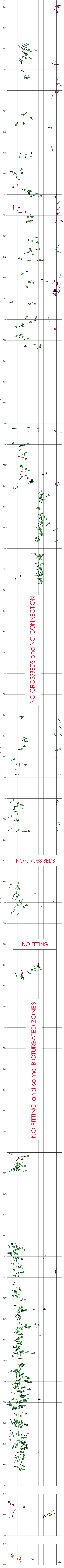
CORES 1 to 3
FROM 3512m to 3605m
Scale 1/40
689 data

- (543) ★ CROSS BEDDING
- (49) ▼ OPEN FRACTURE
- (19) ★ DISCONFORMITY
- (33) ▼ CEMENTED GASH
- (4) ★ MICRO FAULT
- (2) ▼ INDUCED FRACTURE
- (23) ★ STRATIFICATION JOINT
- (14) ★ BEDDING

2001/06/27

SEDIMENTARY PLANES

TECTONIC PLANES

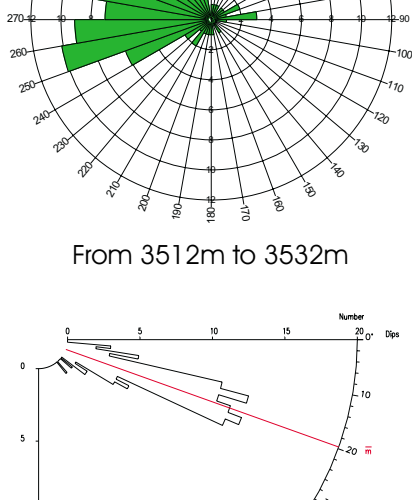


NO CROSSBEDS and NO CONNECTION

NO CROSS BEDS

NO FITTING

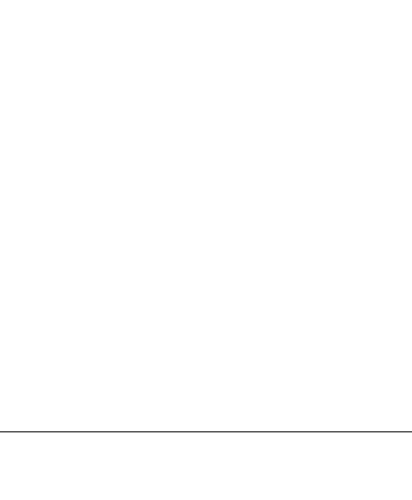
NO FITTING and some BIOTURBATED ZONES



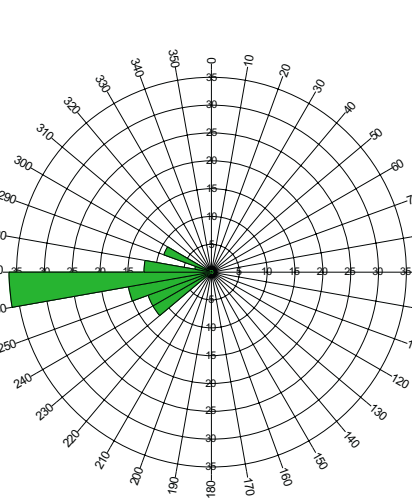
From 3512m to 3532m



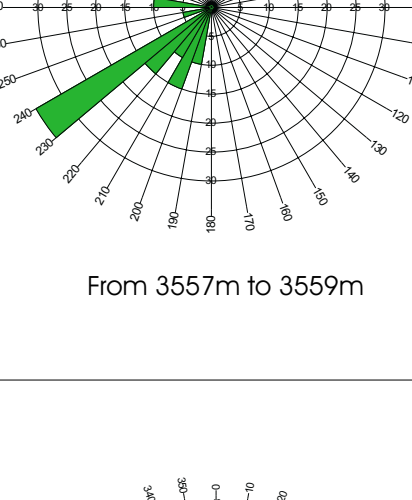
From 3535m to 3538m



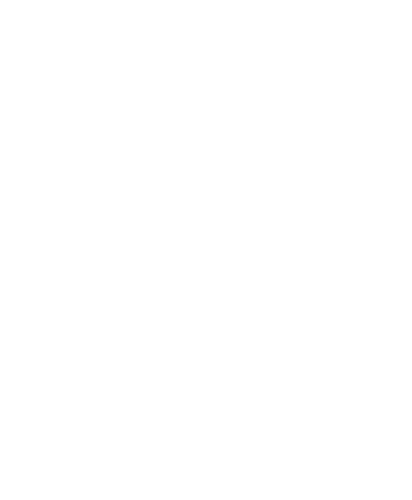
From 3538m to 3543m



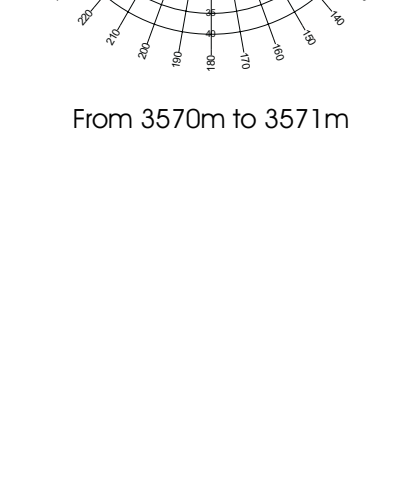
From 3549m to 3555m



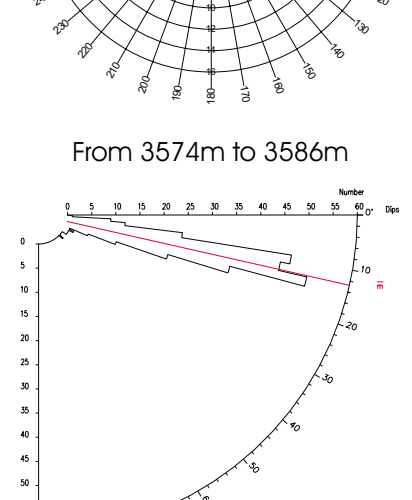
From 3557m to 3559m



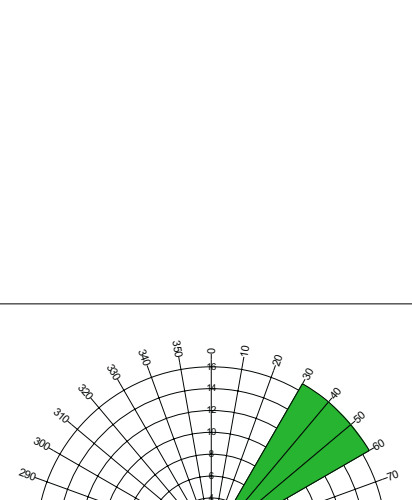
From 3561m to 3562m



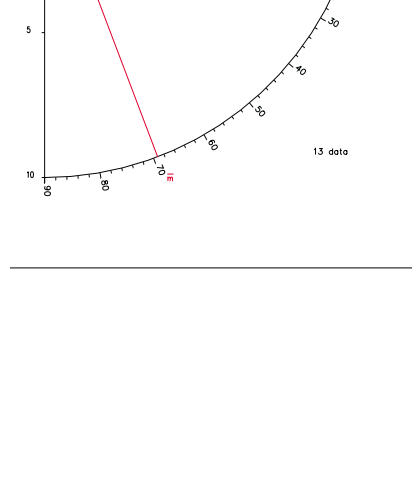
From 3570m to 3571m



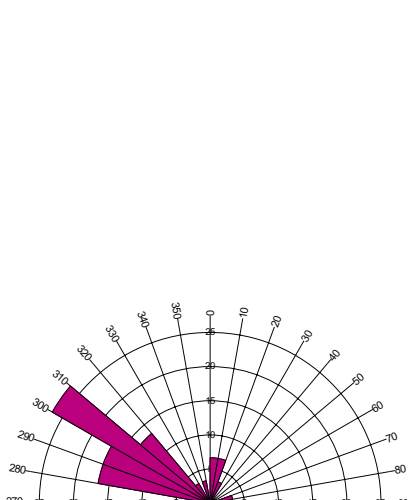
From 3574m to 3586m



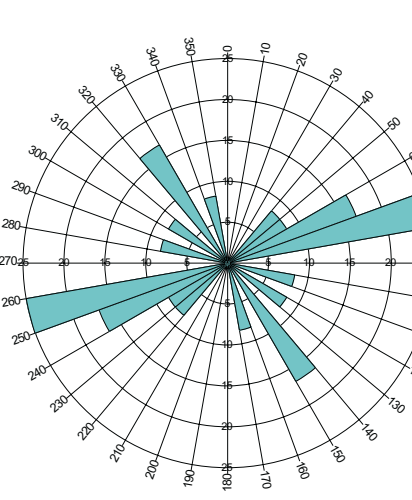
From 3596m to 3604m



Open fractures From 3512m to 3516m



Open fractures From 3516m to 3533m



Cemented gashes From 3549m to 3555m



From 3574m to 3586m