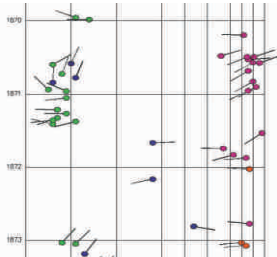


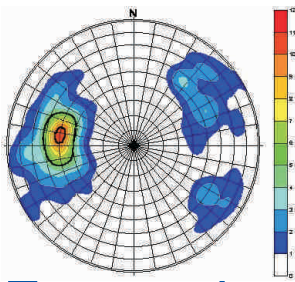


# Geological Services

The number one provider of reservoir coring services for the global oil & gas industry



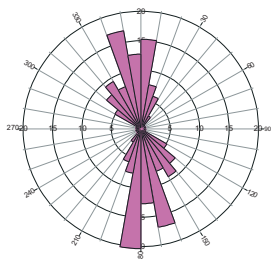
## Acquisition



## Processing



## Restitution



## Structural Analysis

With an exclusive alliance with Corias, ALS Corpro presents the AS3D®, a sophisticated geometric measurement tool-system. This is a portable and high precision goniometric tool designed by geologists for geologists that allows an efficient acquisition and detailed description of both planar and linear geological features with great time savings.

The expertise of our structural geologists along with the AS3D® tool-system delivers a highly detailed core-based structural analysis, from data acquisition and reorientation to both core-scale and reservoir-scale (depending on number of wells studied) structural interpretation.

Our core-based structural analysis provides valuable inputs for static and dynamic modelling of fractured reservoirs and for drilling operations.

## What is included?

- Reliable and detailed structural study of cores, including tectonic and sedimentary features;
- Accurate data reorientation based on well deviation, image log data integration and/or structural/seismic maps;
- Real-time production of graphical outputs, such as dipmeter logs, stereograms, etc.;
- Image data validation and calibration;
- Statistical analysis of core-based structural data;
- Well-scale fracture density and frequency;
- Well-scale fracture porosity and permeability;
- Prediction of optimal drilling direction for both production and injection wells;
- Calculation of the actual maximum horizontal stress;
- Well-scale and regional-scale structural geology and tectonic interpretation.

